

EST.  
1877

# Mattress

## Collection

*Silver Cross*<sup>®</sup>

# IMPORTANT – READ THE INSTRUCTIONS CAREFULLY BEFORE USE AND KEEP FOR FUTURE REFERENCE

Your new Silver Cross mattress is manufactured and designed in the UK with your baby in mind. It's also compatible with all Silver Cross cot beds. Before you unpack your new mattress, please take some time to read through this leaflet as you will find some

Ensure your baby gets the best sleep possible with our brand new collection of cot bed mattresses.

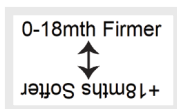
Our True Fit™ collection is designed for comfort and safety, with square-shaped corners to ensure a better fit in your cot bed.

Each of the three mattresses offers the utmost in quality and features pocket springs for the best support, breathable hypo-allergenic fabrics, moisture-management properties and removable washable covers. They will keep your baby perfectly supported from newborn through to toddler.

## Using the mattress

Check the mattress fits your cot and remove all plastic packaging and stickers, disposing of them safely (out of children's reach).

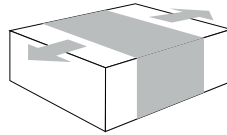
The mattress inner core is reversible, providing targeted support depending on your baby's age. Check the cover sash to identify the correct side to use for your baby. You will also find a tag that identifies the two different sides attached to the core. (Applicable to Tru-Fit Reversible & Tru Fit Dual Sided Pocket Spring Cot Mattresses).



Core tag identifies sleep surfaces.

To prevent any leaks and spills making it through to the mattress core, an adjustable

waterproof membrane is included with the Tru-Fit Reversible & Tru Fit Dual Sided Pocket Spring Cot Mattresses. We recommend you position this on the section of the mattress that your baby will be sleeping on.



## Size and fitting

The Silver Cross mattress size 1400x700mm fits all Silver Cross Cots.

The 1400x700mm mattress has a tolerance of plus or minus 1cm on length and width.

The mattress is intended for cot/cotbeds which have a maximum gap that does not exceed 3cm between the mattress and sides and ends of the cot/cotbed.

## Before First Use

We recommend you air the mattress in a well-ventilated room for 36 hours prior to use.

## Care

The removable cover and membrane is washable at 40 degrees. Do not tumble dry. Do not use biological detergents, abrasives or bleach. Do not iron or expose to heat.

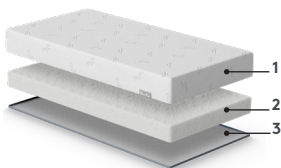
See individual mattress descriptions



## True Fit™ Eco Fibre Cot Mattress (SX5278)

This mattress features the softest 2nd life fabric, made from 100% recycled fibres with excellent breathability and comfort.

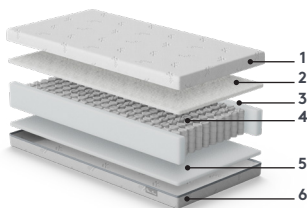
The Eco fibre core, also made from recycled content, offers firm, ultra breathable comfort. For added convenience, the cover zips off for washing.



1. 2nd Life Polyester Fabric (100% Recycled Fibres)
2. Polyester Eco Fibre Pad
3. Water Resistant Polypropylene Fabric

## True Fit™ Reversible Pocket Spring Cot Mattress (SX5279)

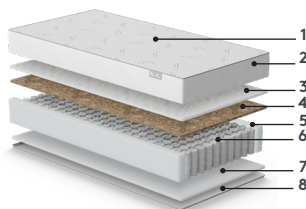
This luxury mattress offers “DualCare” with a firmer sleep side for babies aged 0-18 months and a softer side offering comfort for little ones aged 18 months and onwards. A layer of eco fibre provides the firmness and support needed in early life, while on the reverse side, nursery foam offers a more cushioned and comforting surface, perfect for growing toddlers. 2nd life fabric, made from 100% recycled fibres, is breathable with excellent moisture wicking qualities, while smooth fibres make it super soft to the touch. The mattress features an adjustable waterproof inner layer for added protection, while the cover can be easily removed.



1. 2nd Life Polyester Fabric Top - Baby Design (100% Recycled Fibres)
2. Polyester Fibre Top (Baby Side)
3. Nursery Foam Surrounds
4. 190 Pocket Spring Unit
5. Nursery Foam Base (Toddler Side)
6. 2nd Life Polyester Fabric Base - Toddler Design (100% Recycled Fibre)

## True Fit™ Dual-Sided Pocket Spring Cot Mattress (SX5280)

Our most premium option combines all the features of the Reversible mattress, enhanced for superior performance. It includes a higher number of pocket springs to provide ultimate comfort for your baby. Additionally, the use of natural and sustainable coconut coir ensures long-lasting support while maintaining a clean and fresh sleeping environment, thanks to its natural resistance to dust mites and mold.



1. 2nd Life Polyester Fabric Top - Baby Design (100% Recycled Fibres)
2. Plain Polyester Fabric Side
3. Polyester Eco Fibre Top (Baby Side)
4. Natural Rubberised Coconut Coir (Baby Side)
5. Nursery Foam Surrounds
6. 220 Pocket Spring Unit
7. Nursery Foam Base (Toddler Side)
8. 2nd Life Polyester Fabric Base - Toddler Design (100% Recycled Fibre)

## Specification Table

	True Fit™ Eco Fibre Cot Mattress SX5278	True Fit™ Reversible Pocket Spring Cot Mattress SX5279	True Fit™ Dual Sided Pocket Spring Cot Mattress SX5280
True Fit™	✓	✓	✓
Breathable	✓	✓	✓
Waterproof Inner		✓	✓
Removable washable cover	✓	✓	✓
Machine washable cover at 40°C	✓	✓	✓
Pocket springs		190	220
Made with 100% Recycled Fabric	✓	✓	✓
Moisture wicking	✓	✓	✓
Dual Sided for Baby & Toddler		✓	✓

## Safety

The Silver Cross mattress meets all required British safety and regulatory standards.

The foam used is Certi-PUR certified.

This Mattress conforms to:  
BS EN 16890 : 2017 + A1: 2021 and  
BS 7177:2008+A1 2011.

## Storage

The mattress should be stored flat for any long periods of time.

Do not store in a closed plastic bag to avoid the build up of damp.

Make sure to store the mattress in a clean, dry and well ventilated location.

Do not store in direct sunlight.



## UK

Silver Cross (UK) Ltd.  
Micklethorn, Broughton,  
Skipton,  
North Yorkshire BD23 3JA

## Warning

**PLEASE REMEMBER: YOUR BABY'S SAFETY IS YOUR RESPONSIBILITY**

**BE AWARE OF THE RISK OF OPEN FIRE AND OTHER SOURCES OF STRONG HEAT, SUCH AS ELECTRIC BAR FIRES, GAS FIRES, ETC. IN THE NEAR VICINITY OF THE COT.**

**DO NOT USE MORE THAN ONE MATTRESS IN THE COT.**

**THIS MATTRESS MAY NOT SOAK UP VOMIT.**

**DO NOT USE THE PRODUCT IF ANY PART IS BROKEN; TORN OR MISSING AND USE ONLY SPARE PARTS APPROVED BY THE MANUFACTURER.**

**ENSURE THAT THE MATTRESS IS COMPLETELY DRY BEFORE USE.**

**AVOID OVERHEATING THE BABY AND FOLLOW GOOD HYGIENE.**

**SHOULD YOU PASS THIS MATTRESS ONTO ANOTHER PERSON, PLEASE PASS ON THESE INSTRUCTIONS WITH IT.**